

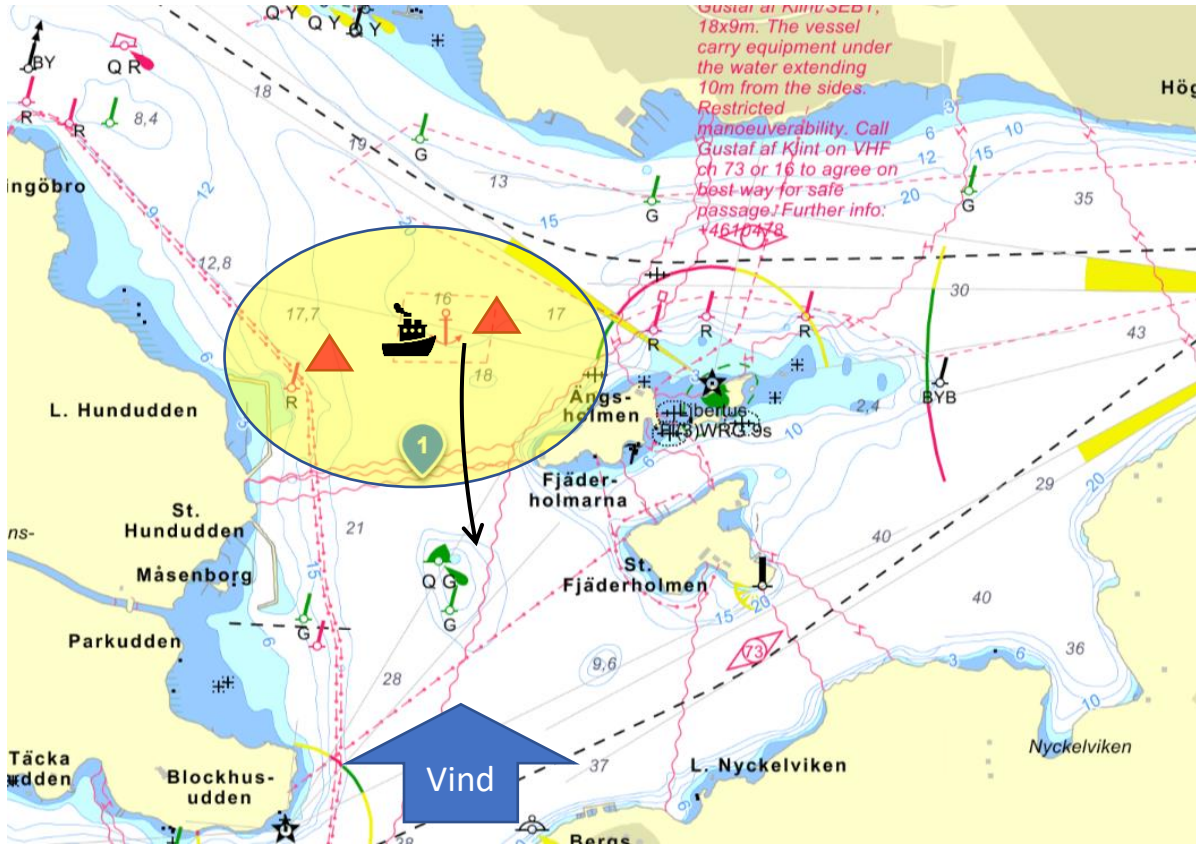
Tune up 2023



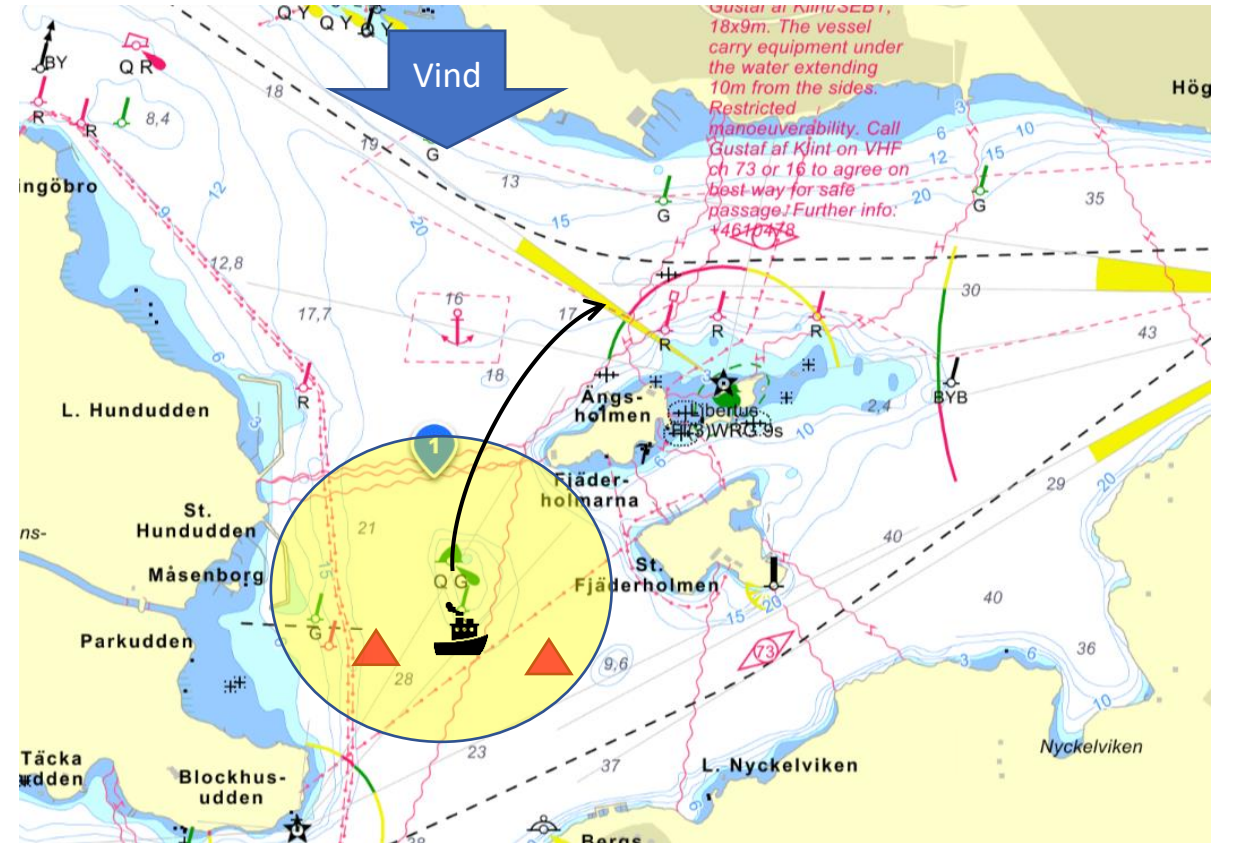

gotland
OFFSHORE
RACE 2023 **run****t**

Start area Tune up 2023

Course D South winds



Course E North winds



Course D: 8,8 NM

Tune up 2023

Start position according to start area

All marks to be taken on port

Coordinates in WGS84

A: QG mark – 59°19'39.7"N 18°9'45.4"E

B: G mark - 59°19'35.2"N 18°9'47.3"E

C: BYB mark – 59°19'56.2"N 18°11'16.6"E

D: G mark - 59°20'14.2"N 18°11'21.7"E

E: QG mark – 59°20'13.2"N 18°10'24.1"E

F: QG mark – 59°20'19.0"N 18°9'42.0"E

G: G mark – 59°21'20.4"N 18°7'9.9"E

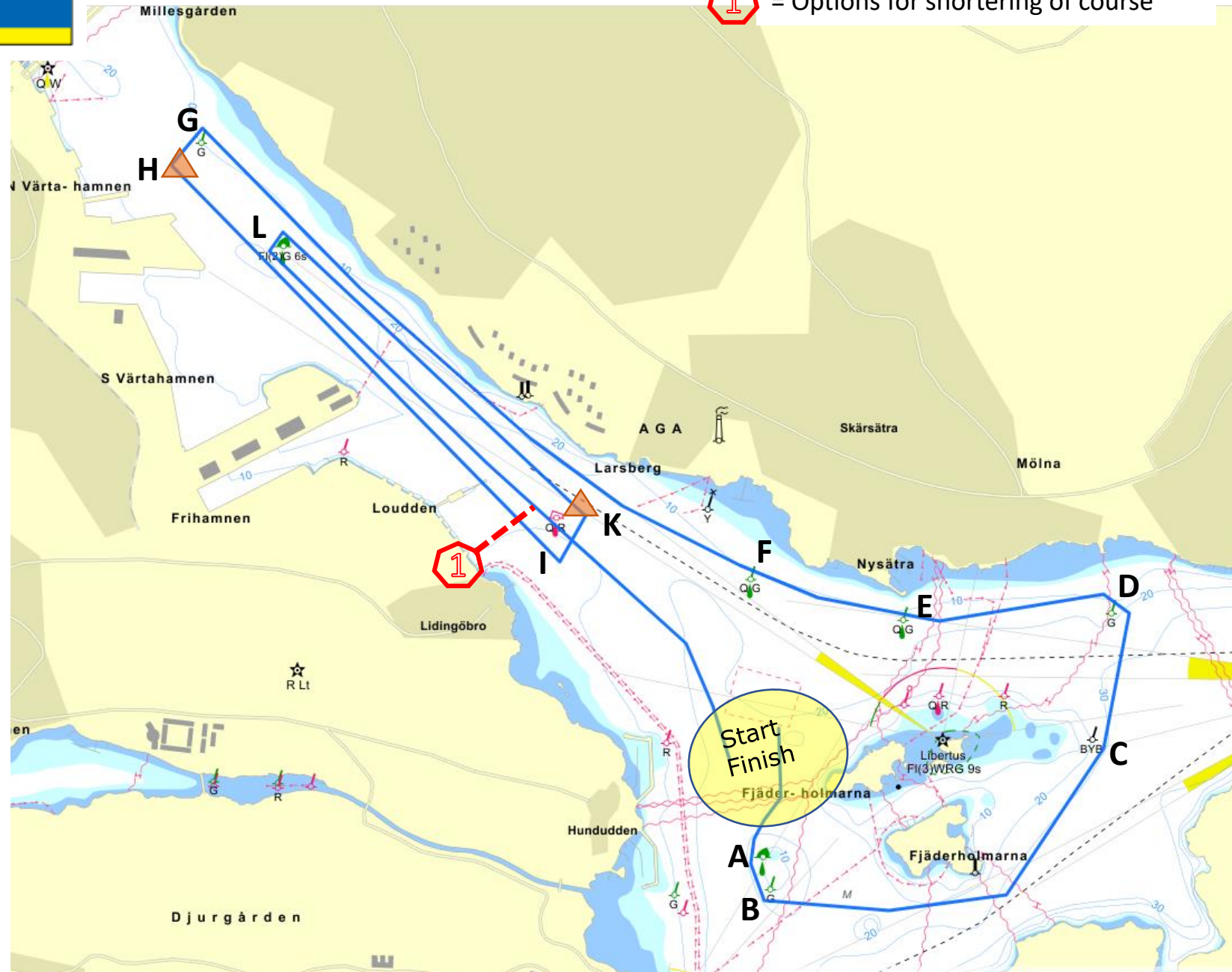
H: Red tetraether

I: QR mark - 59°20'27.6"N 18°8'48.0"E

K: Red tetraether

L: FI(2)G 6s mark - 59°21'5.9"N 18°7'32.6"E

D



Course E: 9,8NM
Tune up 2023

E



Start according to start area

All marks to be taken on starboard

Coordinates in WGS84

A: H: Red tetraether

B: G mark – 59°21'20.4"N 18°7'9.9"E

C: QG mark – 59°20'19.0"N 18°9'42.0"E

D: QG mark – 59°20'13.2"N 18°10'24.1"E

E: G mark - 59°20'14.2"N 18°11'21.7"E

F: BYB mark – 59°19'56.2"N 18°11'16.6"E

G: Fl(2)G 6s mark - 59°21'5.9"N 18°7'32.6"E



= Options for shortening of course

