



**23-30 AUGUST**



apotea.se

# EUROPEAN CHAMPIONSHIP SANDHAMN 2025



# ONLINE INFORMATION MEETING

## APOTEA J/70 EUROPEAN CHAMPIONSHIP 2025

Marie Båge – Senior project manager KSSS

Christofer Bjelvenius – Location manager Bullandö KSSS

Kristina Wiktander Broman - Principal Race Officer KSSS

# AGENDA

1. Registration!
2. Two Venues
  - Bullandö - Launching Inspection Measurement Towing
  - Sandhamn - Final Registration & Racing
3. Race Officer update
4. Social Events
5. Communications
6. Questions



# 1. REGISTRATION SAILARENA

- Please make sure that your team information is up to date and complete in Sailarena.
- All crew members are also required to have a valid World Sailing Sailor ID.
- All competitor crew names must be listed on the event page before checking in at registration.

➤ <https://www.sailarena.com/en/se/club/ksss/europeen-championship-j70-2025/>

## 2. WORLD SAILING ID

All competitors (crew and skippers) must add their valid World Sailing ID number to the event registration page. If you do not have this ID number or you need to check if it has expired, please go to the below link:

➤ <https://www.sailing.org/sailors/sailor-categorisations/>



### 3. J/70 CLASS ASSOCIATION MEMBERSHIP

Remember that ALL World Sailing Group 3 crew must be current members of the J/70 Class Association. If someone needs to sign up for membership, you can do so at the below link:

➤ <https://v1.yachtscoring.com/j70class/>

## 4. SELF-COMPLIANCE FORM & MANUFACTURERS DECLARATION

- Complete the self-compliance document and return it to onsite registration.
  - Self-compliance document
- If you do not have a Manufacturers Declaration, please set-up an appointment with event Technical Chair Christofer Howell.
  - Email [howell@j70office.com](mailto:howell@j70office.com)



# The Venues

## Bullandö

- Launching
- Check-In
- Inspection

## Sandhamn

- Racing Venue
- J/70 Mooring
- Race Village
- Race Office





**BULLANDÖ MARINA**  
*„Ostkustens mesta Marina!“*



## BULLANDÖ MARINA

- Check-in & Pre-registration Race Office  
Bow numbers attached by KSSS
- Rigging Area
- Mandatory Equipment Check and Compliance Inspection
- Launching Area: Appendices Inspection and final boat launch
- Sail measuring (indoor)
- Towing Area
- Parking
- Restaurant, Café, Convenience store

Directions - [Google maps link](#)

Bullandö Marina, Bullandövägen 30, 139 56 Värmdö





# EQUIPMENT INSPECTION

## **Station 1: Registration**

Location: Check-in(1)

## **Station 1a: Bow numbers**

Location: next to Check-in (1)

## **Station 2: Mandatory equipment check**

Location: Straight ahead the trail (3)

## **Station 3 Compliance Inspection**

Location: Straight ahead the trail (3)

- deck hardware
- Manufacturer Declaration (MD)
- Corrector weight
- Bow sprit length

## **Station 4: Appendices inspection, boat launch**

Location: at the crane (4)

- keel inspection
- rudder inspection

## **Station 5: Sail inspection**

Location: Boat hall by the crane (4)

- Main Sail
- Jib
- Gennaker and optional Gennaker

## CHECK-IN BULLANDÖ

- All boats have to check-in at Bullandö
- All boats have to go up on trailers even if you arrive on water. Masts can stay rigged.
- Sign up for a check-in slot if you have not yet signed up!
- Sign up here
- **CHANGE** - First check-in 10.00 am on Saturday



*We will reach out and reschedule times that are booked earlier then 10am*

# TOWING BULLANDÖ-SANDHAMN

After inspection we provide towing from Bullandö to Sandhamn.

As soon as your boat has been launched the boats will be directed to the end of the marina to the towing dock. We will have a tender boat to assist if needed.

At least one person from each crew has to be in the J/70 during the towing to Sandhamn.

We will start towing as soon as the first 4-6 boats are launched and placed at the towing dock.

We will tow 4-6 boats at the time with the help of our partners TeamMarin and Svenska Sjö.

The towing process takes approximately 2 hours from start to finish.

It is not mandatory to be towed. If you want to sail or tow on your own you are free to do so.



## ACCOMMODATION BULLANDÖ

- A limited number of private cabins are available for rent by owners at walking distance from the inspection area. Equipped with bathrooms and kitchens.
- If interested, please contact Christofer Bjelvenius [c.bjelvenius@icloud.com](mailto:c.bjelvenius@icloud.com), who can share contact details to landlords.





## PASSENGER FERRIES BULLANDÖ TO SANDHAMN 23 & 24 AUGUST

### Saturday 23 August

Leaving Bullandö at:

- 12.30
- 16.10
- 18.30

### Sunday 24 August

Leaving Bullandö at:

- 12.30
- 18.45

Please email [regatta@ksss.se](mailto:regatta@ksss.se) if you want to book a spot



# SANDHAMN

- Berthing – Assigned spots
- Race Office – final registration
- Hearing/Jury Rooms  
Sandhamn Seglarhotell
- Sailor Services
- Social Events
- Guest Harbours

Sandhamn, Lökholmen, Telegrafholmen



Please email [sandhamn@ksss.se](mailto:sandhamn@ksss.se) if you want to book a harbour spot



## TELEGRAFHOLMEN

- KSSS Guest Harbour
- Private residences

KSSS GUEST HARBOUR  
TELEGRAFHOLMEN

KSSS GUEST HARBOUR  
LÖKHOLMEN

VARVET

KSSS Seglarläger  
Lökhölmén

TROLLGÅRDEN  
CAFÉ & RESTAURANT

KSSS MEMBER HARBOUR  
LÖKHOLMEN

## SANDHAMN

1. J/70 Berthing
2. Race Office
3. Hearing/Jury Rooms
4. Sailor Service
5. Morning Race Briefings/  
After Sail & Social Events

KSSS SHUTTLE FERRY

## LÖKHOLMEN

1. Official boats
2. Volunteers morning meeting
3. KSSS Camp facilities –  
SailorsB&B
4. KSSS Guest Harbour





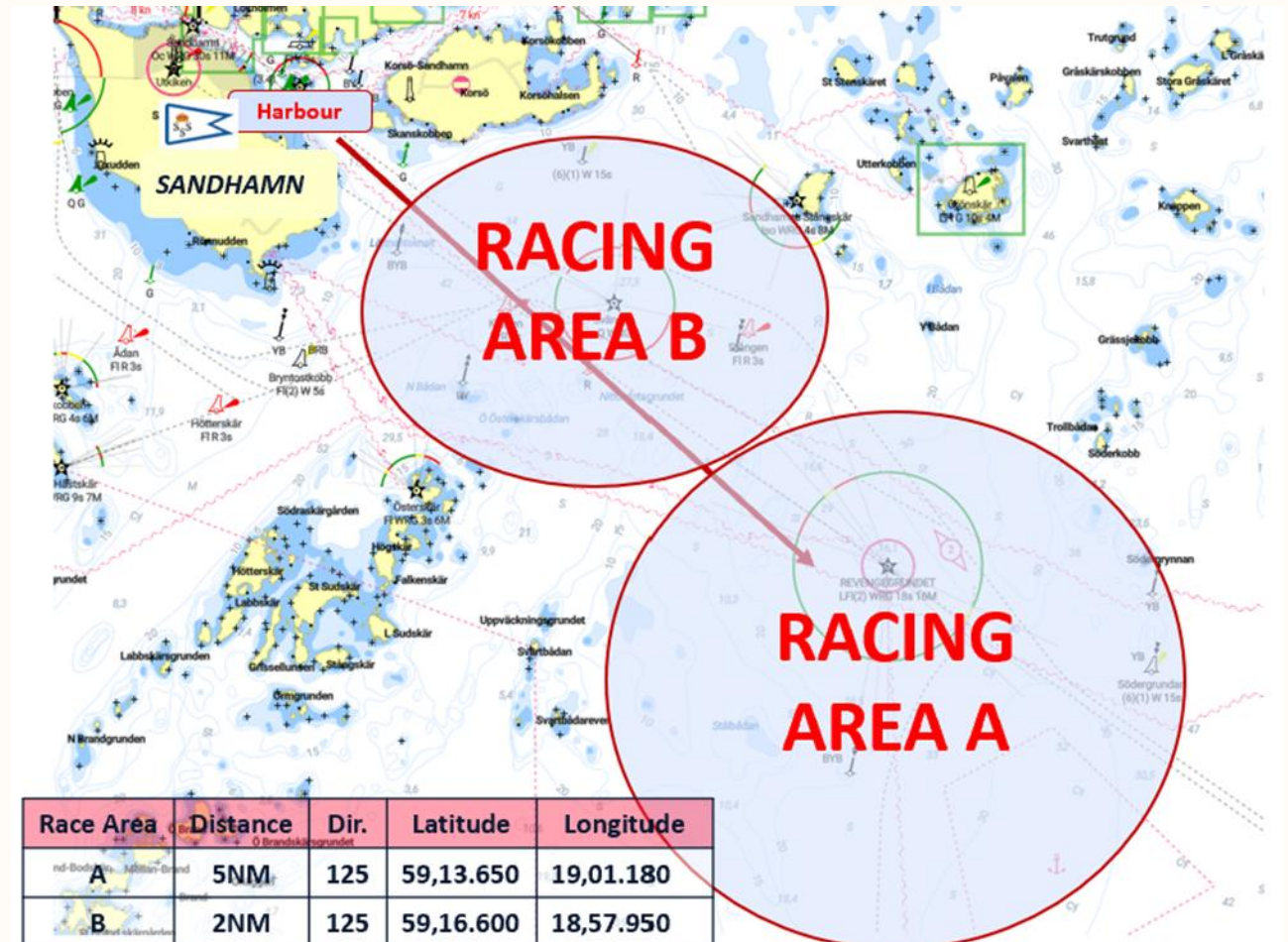
# RACE OFFICER UPDATE

Kristina Wiktander Broman - Principal Race Officer

Will be your host on the water along with team of volunteers and international representatives.

# SAILING INSTRUCTIONS

- SI's - Sailing Instructions are published
- Read SI's carefully, along with NoR
- Questions? Please e-mail [regatta@ksss.se](mailto:regatta@ksss.se)
- Pay attention to the shallow areas
- Daily meetings at 09:00 at Sandhamn, with more details



# VAKAROS

- Vakaros devices with Race sense software will be used
- Make sure you have a Valid Vakaros Race Sense Pass
- Updated Software
- To be scanned at final registration in Sandhamn (Race Office)



# SOCIAL EVENTS SANDHAMN

August 25 - Opening Ceremony 17:00

August 26 - After Sail  
DJ, Beer & Snack

August 27 - Crew Party from 18:00  
Burger & Beer

August 28 - After Sail  
DJ, Beer & Snack

August 29 - After Sail  
DJ, Beer & Snack

August 30 - Regatta Dinner

A Memorable conclusion of the regatta at Sandhamn Seglarhotell - [Book Your Tickets!](#)



# COMMUNICATIONS

WhatsApp Group

Join with QR code or link

[https://chat.whatsapp.com/E2Tp8YiegIG3anMBgmE8vU?mode=ac\\_t](https://chat.whatsapp.com/E2Tp8YiegIG3anMBgmE8vU?mode=ac_t)

Official Notice Board





Q&A

REGATTA@KSSS.SE





# EQUIPMENT INSPECTION ADD-ON

Information Meeting  
Thomas Loesch  
International Measurer  
+49 163 877 5400



# EQUIPMENT INSPECTION

- Equipment Substitution
- Crew Substitution

-> on the water: hailing on the VHF Channel or by voice

-> off the water: online via ONB online request form

## J/70 Equipment Regulations

- personal equipment as well as the rig, and appendages shall not be removed from boats after inspection until the end of the event (4.3)
- After inspection, sails shall be immediately returned to the boat and kept on the boat until the end of the event (9.4)

## Class Rule (CR I.3)

A boat shall receive no outside assistance from the time the boat leaves its dock or mooring until the boat has returned to the dock or mooring each day, including being towed by a competitor or any other vessel.



 apotea.se

# EUROPEAN CHAMPIONSHIP

SANDHAMN 2025